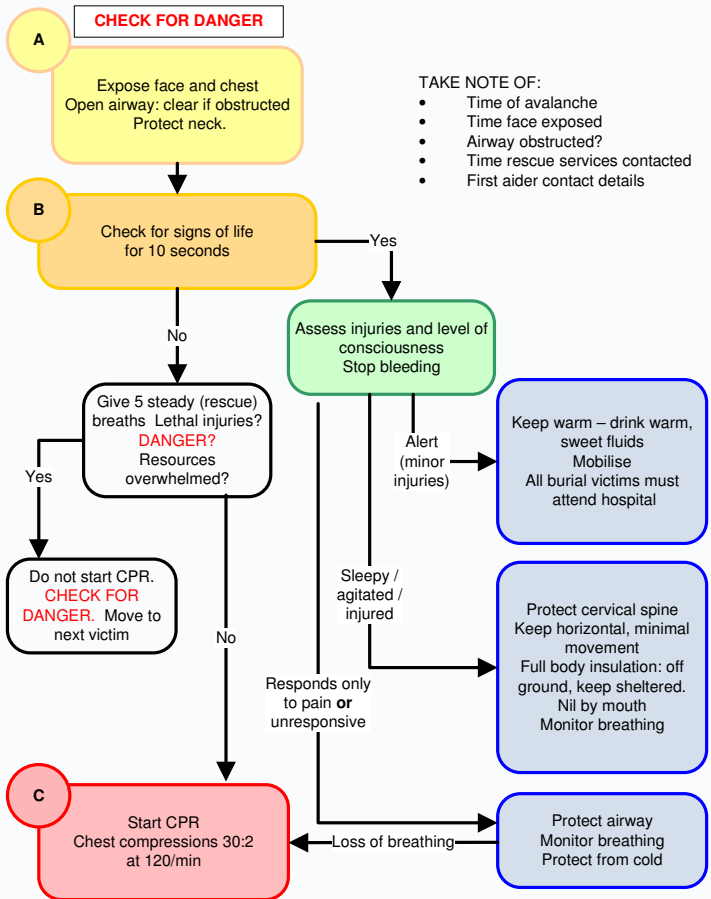


AVALANCHE VICTIM FIRST AID



TAKE NOTE OF:

- Time of avalanche
- Time face exposed
- Airway obstructed?
- Time rescue services contacted
- First aider contact details

COMPANION RESCUE PROCEDURE

PERSONAL / GROUP SAFETY

Watch victim(s) and note point last seen

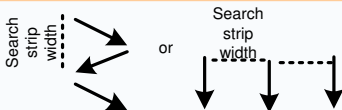
Assess: further risk? Account for group? Who's missing?

Assign a leader and a searcher. Searchers turn to SEARCH, other party members turn to RESCUE SEND, STANDBY or OFF

SIGNAL SEARCH

Eyes, Ears and Transceiver

Mark point last seen and point of signal reception



COARSE SEARCH

Transceiver horizontal; fast to 10m

then skis off, one step per second to within 3m of victim

FINE SEARCH

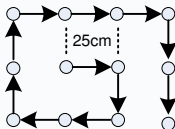
Straight line just above snow surface

Probe and shovels ready



PINPOINT

Spiral probe 25cm spacing until strike



LEAVE PROBE IN PLACE

DIG 1½ x burial depth down slope from probe; conveyor belt digging in a Λ shape

FOLLOW AVALANCHE VICTIM CARE PROCEDURE

SEARCH for next victim as soon as possible. Once search is completed all transceivers to SEND mode

EMERGENCY NUMBERS

SWISS 144 EU 112

By Terry Ralphs IFMGA
© Eagle Ski Club 2025